

Community Board 2 Presentation

January 11, 2018

**487 Hudson Street
New York, NY, 10014**

Greenwich Village Historic District: LP - 00489

Block: 605

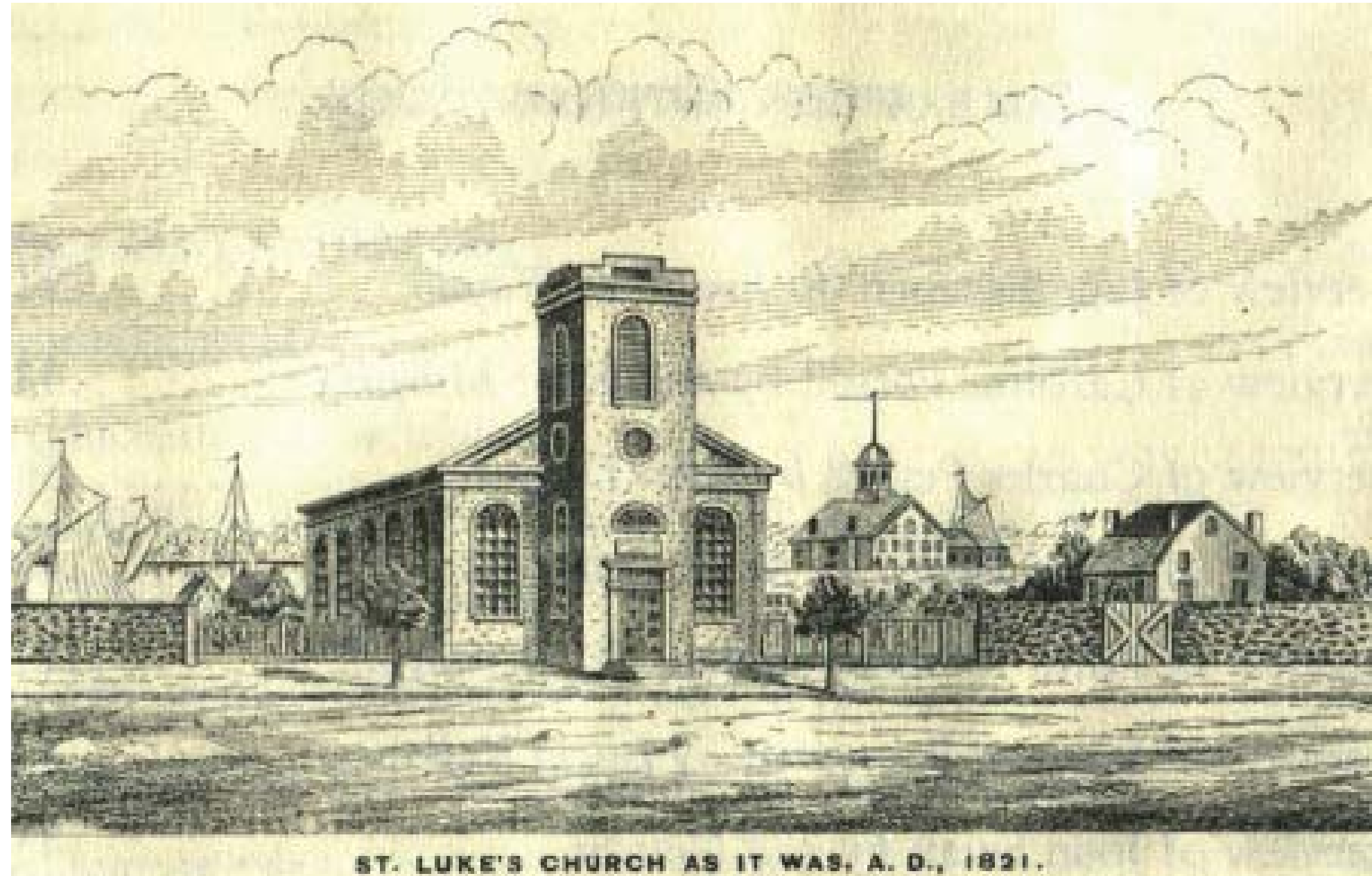
Lot: 31



Preservation, Planning & Sustainable Design

One Bridge Street-Suite One
Irrington, New York 10533
914-991-1900 voice | 914-991-1999 fax
www.MadernRains.com

Historic Images



1821



Early 1900s



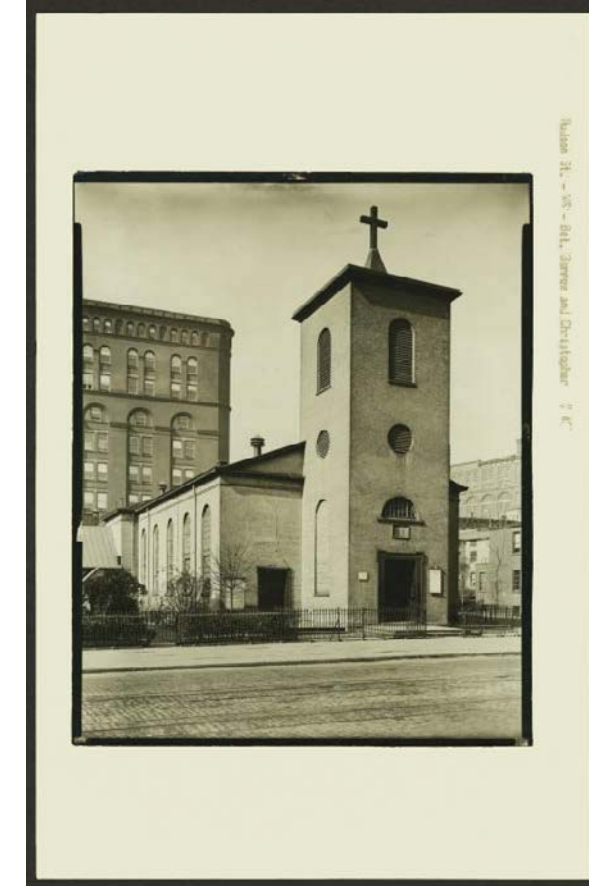
1912



Early 1900s



1915



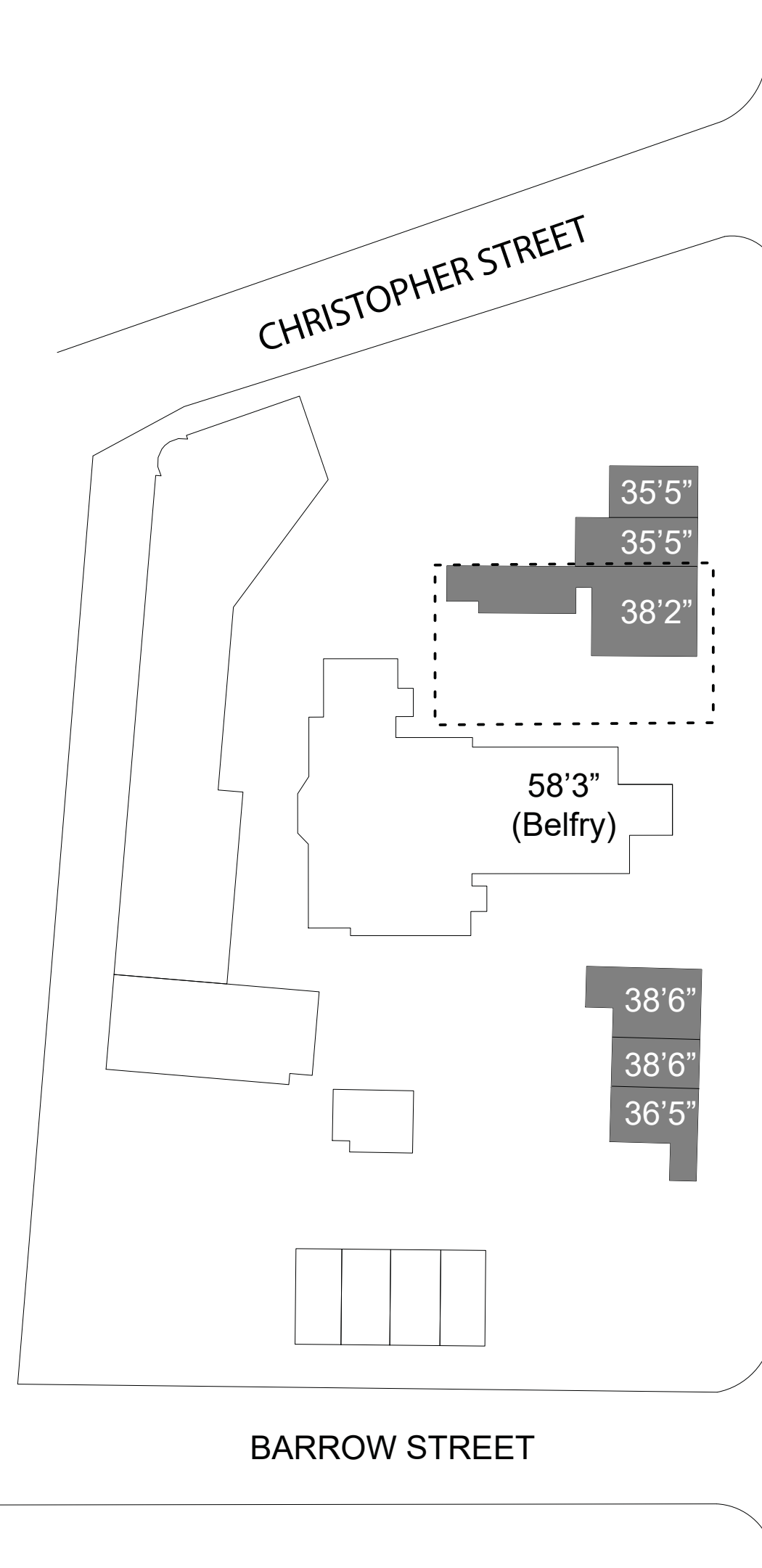
1935

Sanborn Map

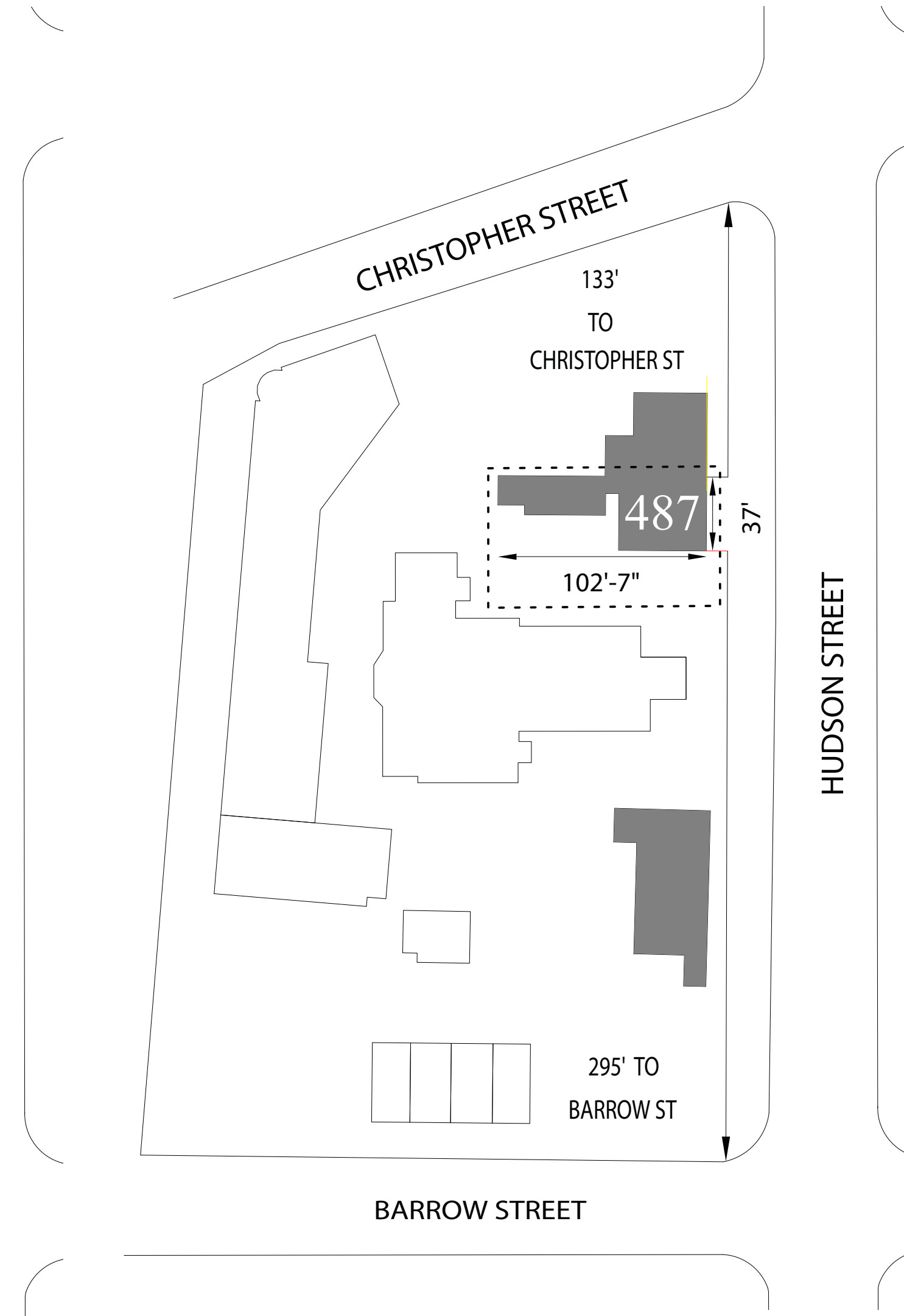


Sanborn Map: 1895-Volume 3, Sheet 52

Block Plan

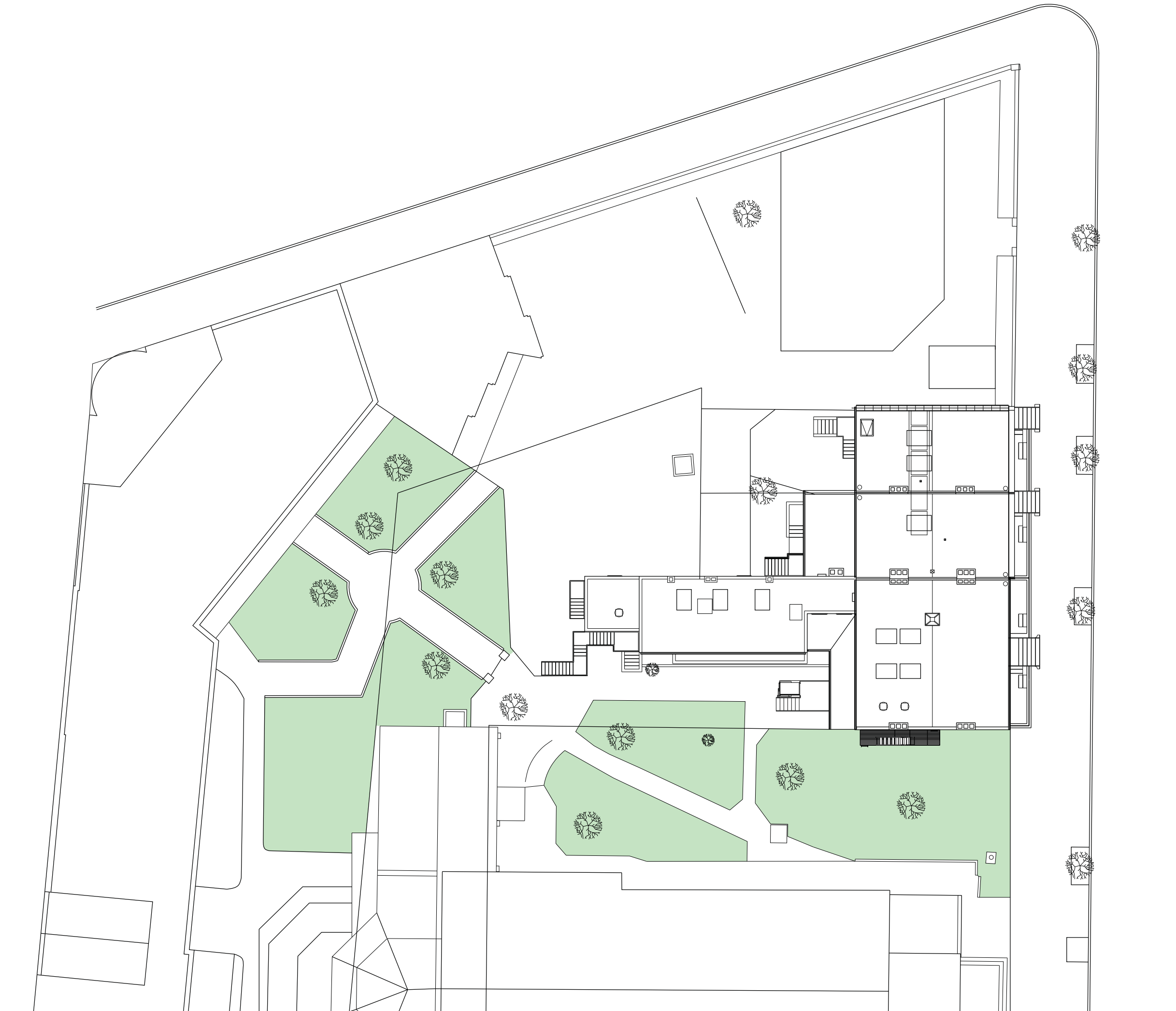
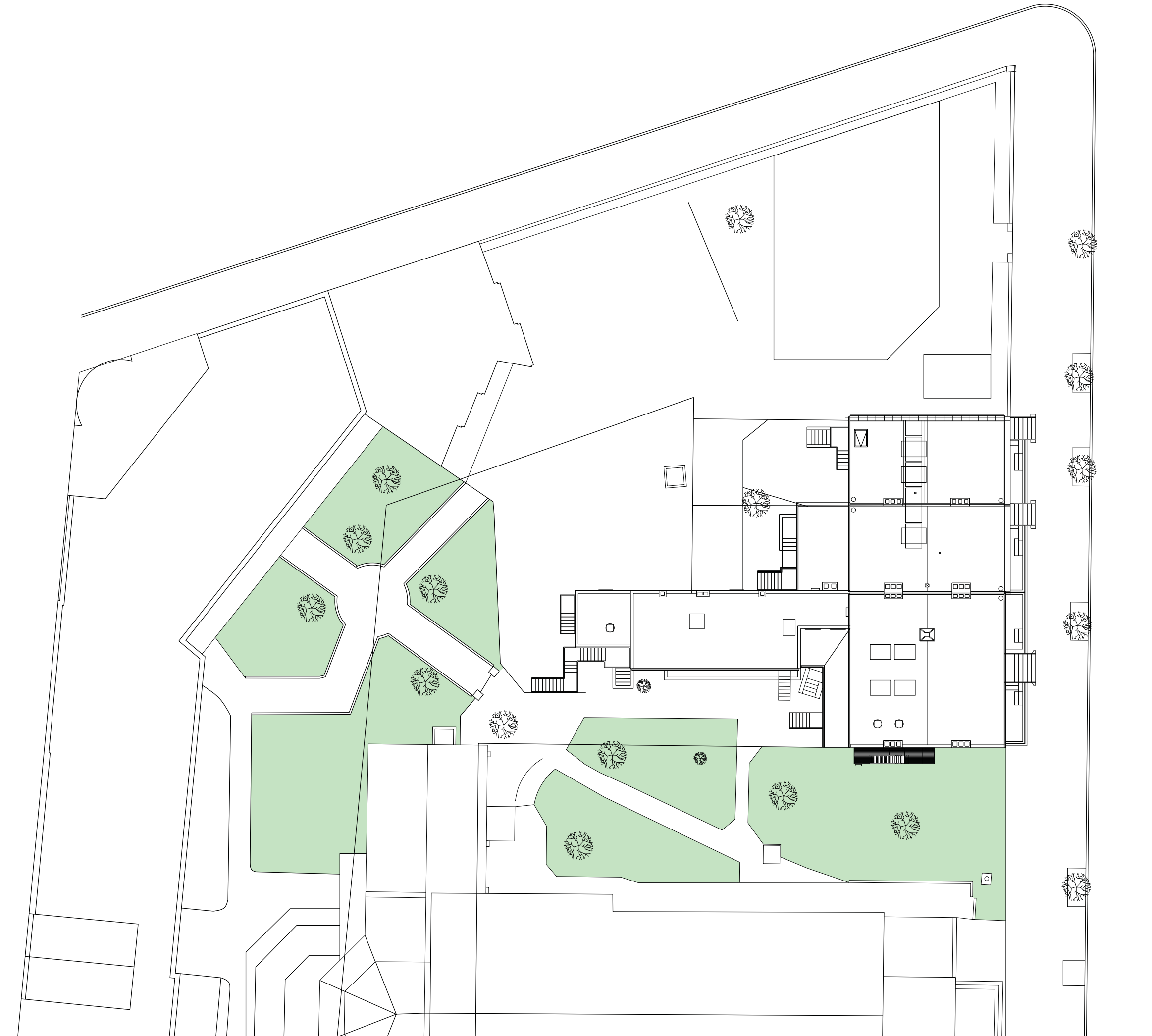


Block Plan: Building Heights



Block Plan: Distance to Cross-Streets

487 Hudson - Detail Block Plan



Detail Block Plan: Existing

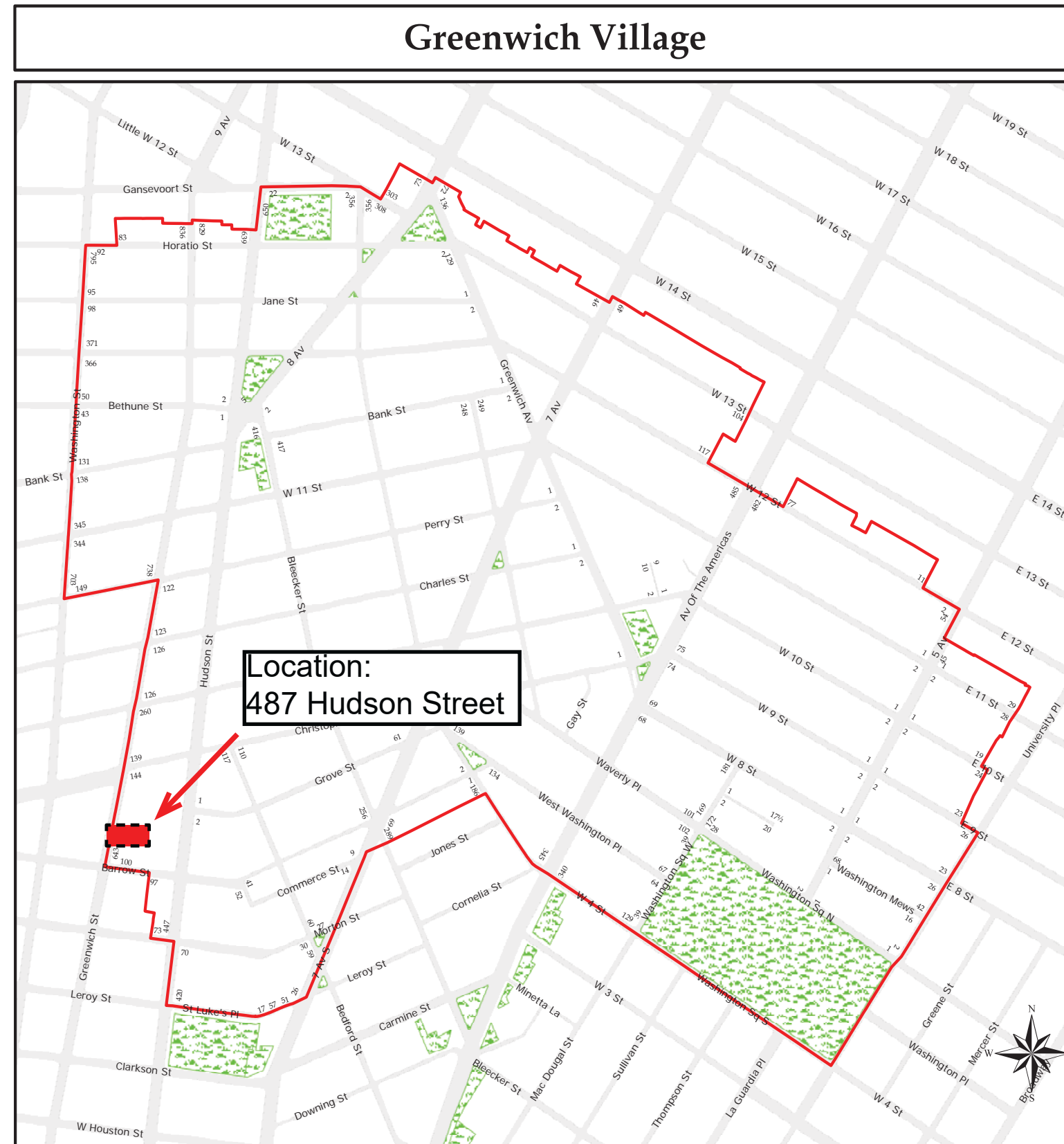
Detail Block Plan: Proposed




Preservation, Planning & Sustainable Design
One Bridge Street-Suite One
Irrington, New York 10533
914-991-1900 voice | 914-991-1999 fax
www.MadernRains.com

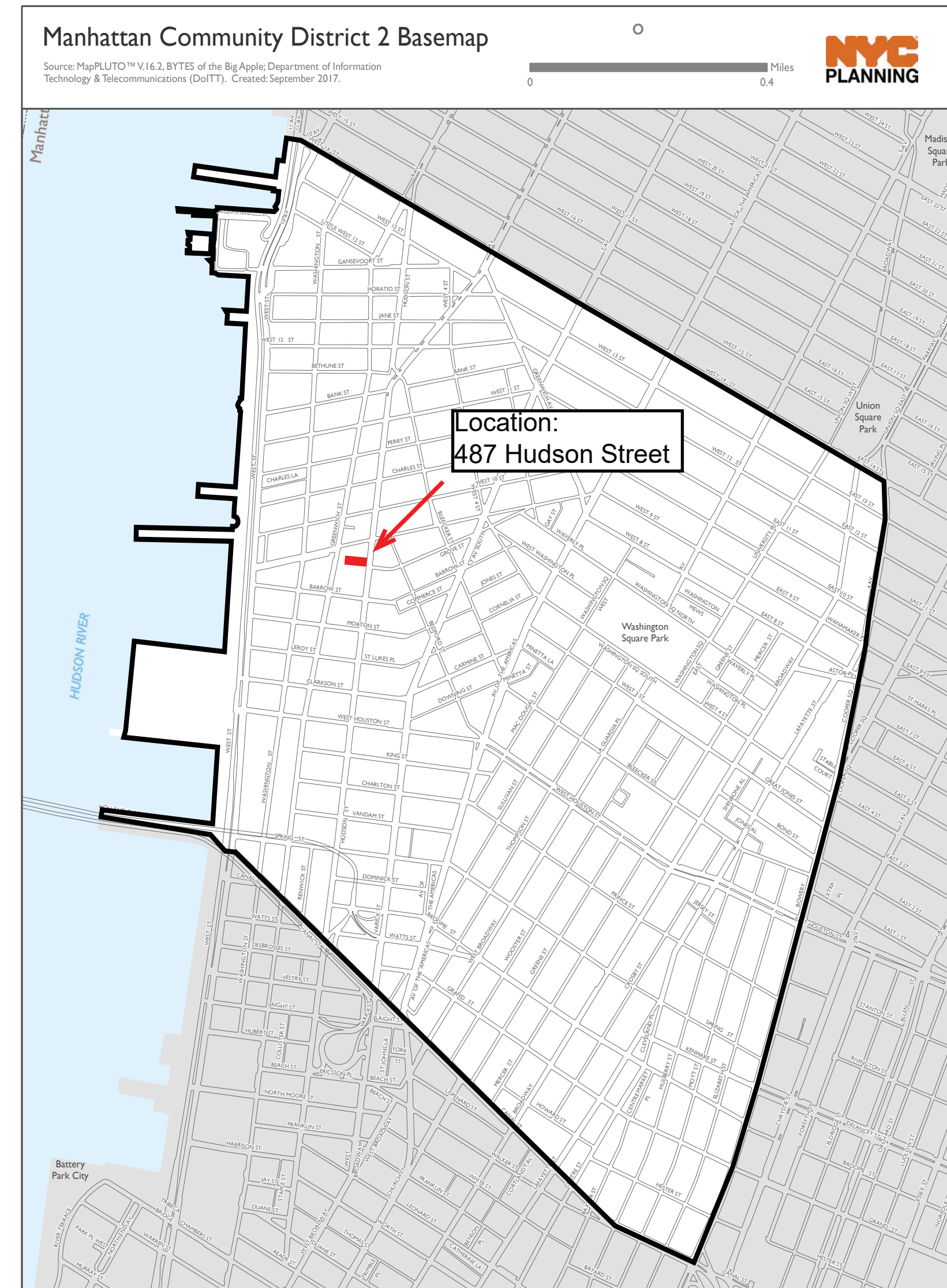


Historic and Community District Maps



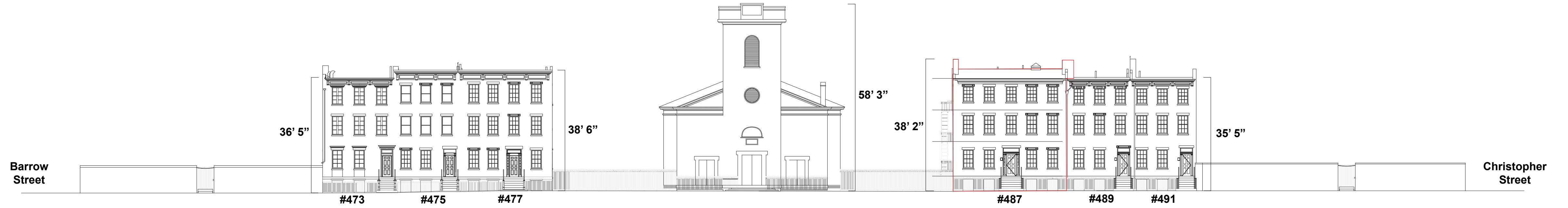
Greenwich Village Historic District
Manhattan
Designated April 29, 1969

 Historic District Boundaries



Preservation, Planning & Sustainable Design
One Bridge Street-Suite One
Irrington, New York 10533
914-991-1900 voice | 914-991-1999 fax
www.Midtown.com

Streetscape Elevations



Streetscape Elevation: Hudson Street
from Christopher to Barrow



Streetview Elevation: Hudson Street
from Christopher to Barrow



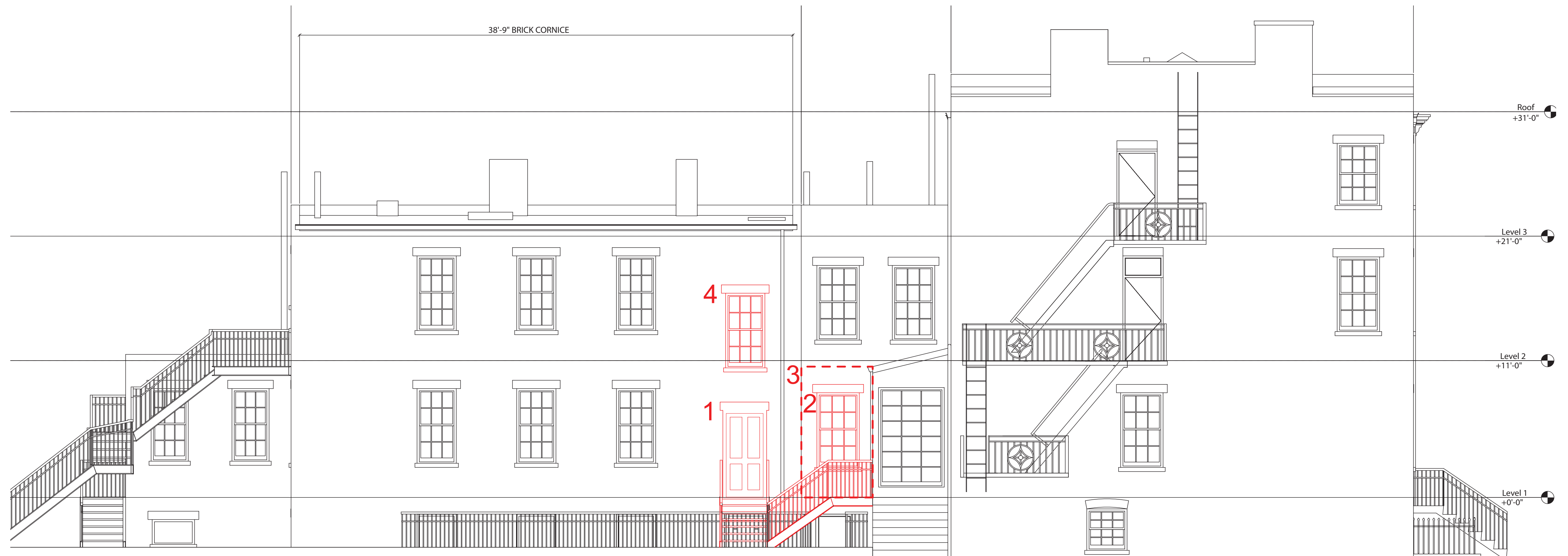
Preservation, Planning & Sustainable Design
One Bridge Street-Suite One
Irrington, New York 10533
914-931-1900 voice | 914-931-1999 fax
www.MadernRains.com

Photo-Montage



Preservation, Planning & Sustainable Design
One Bridge Street-Suite One
Irrington, New York 10533
914-991-1900 voice | 914-991-1999 fax
www.MademRains.com

Scope of Work



South Elevation: External Areas of Impact

Scope of Work for exterior alterations:

- Remove door and staircase on south facade of building (1).
- In place of removed door (1), install window currently located on south facade of building adjacent to existing porch (2).
- Shift existing window on second floor of south facade (4) up to match line of existing adjacent windows.
- Enclose porch above existing basement entry-point (3).



Preservation, Planning & Sustainable Design
One Bridge Street-Suite One
Irrigton, New York 10533
914-991-1900 voice | 914-991-1999 fax
www.ModernRains.com

Existing vs. Proposed Conditions: Hudson Street Viewshed



EXISTING

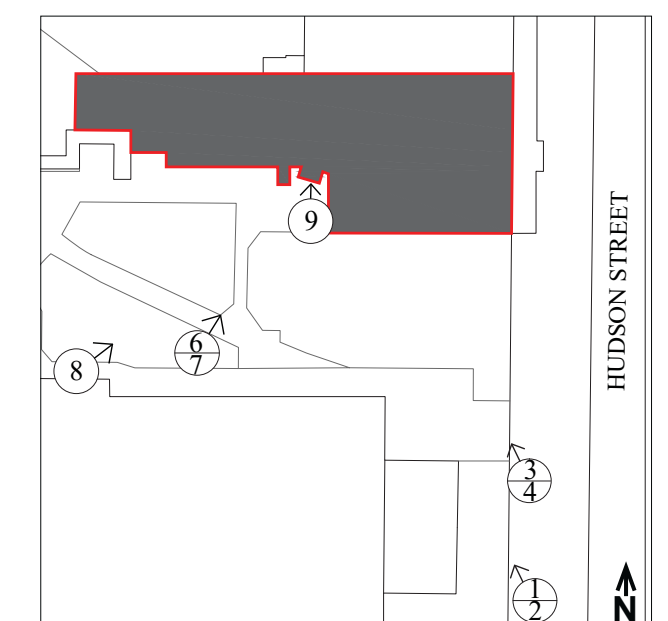
1



PROPOSED

2

Streetscape Elevation Images: Hudson Street from Christopher to Barrow



Location Key

Existing vs. Proposed Conditions: Hudson Street Viewshed



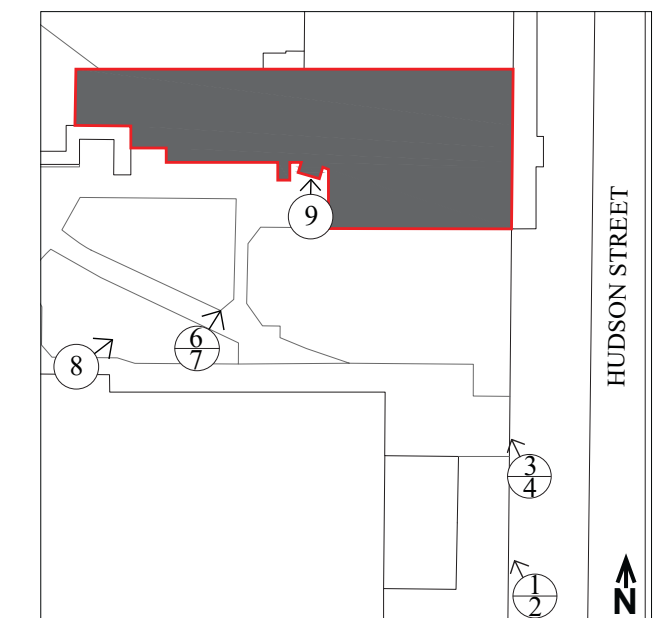
EXISTING

3



PROPOSED

4



Location Key

Existing vs. Proposed Conditions: Public Garden Viewshed



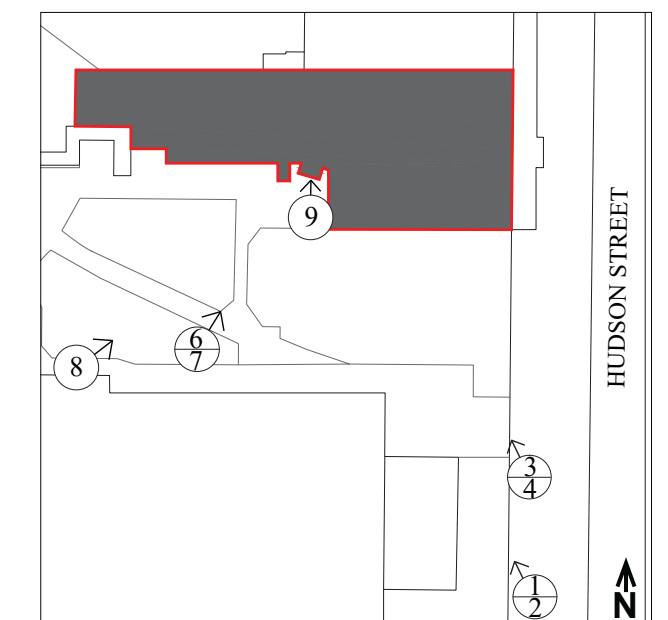
EXISTING

6



PROPOSED

7



Location Key

Mock-Up Photographs



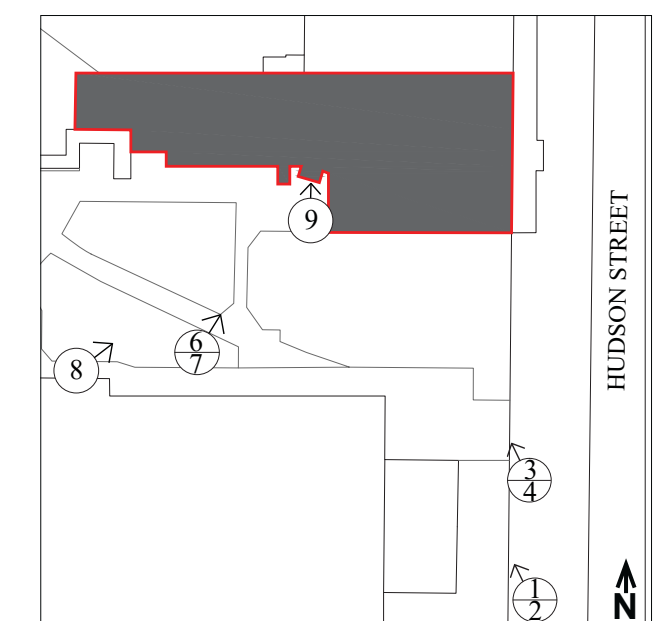
Porch/Annex addition. (Proposed new structure in pink.)

8



Mock Up Detail

9



Location Key

Mock-up and Render: Viewshed from Public Garden



Mock Up Photograph: Porch/Annex addition.
(Location of new structure shown in pink.)

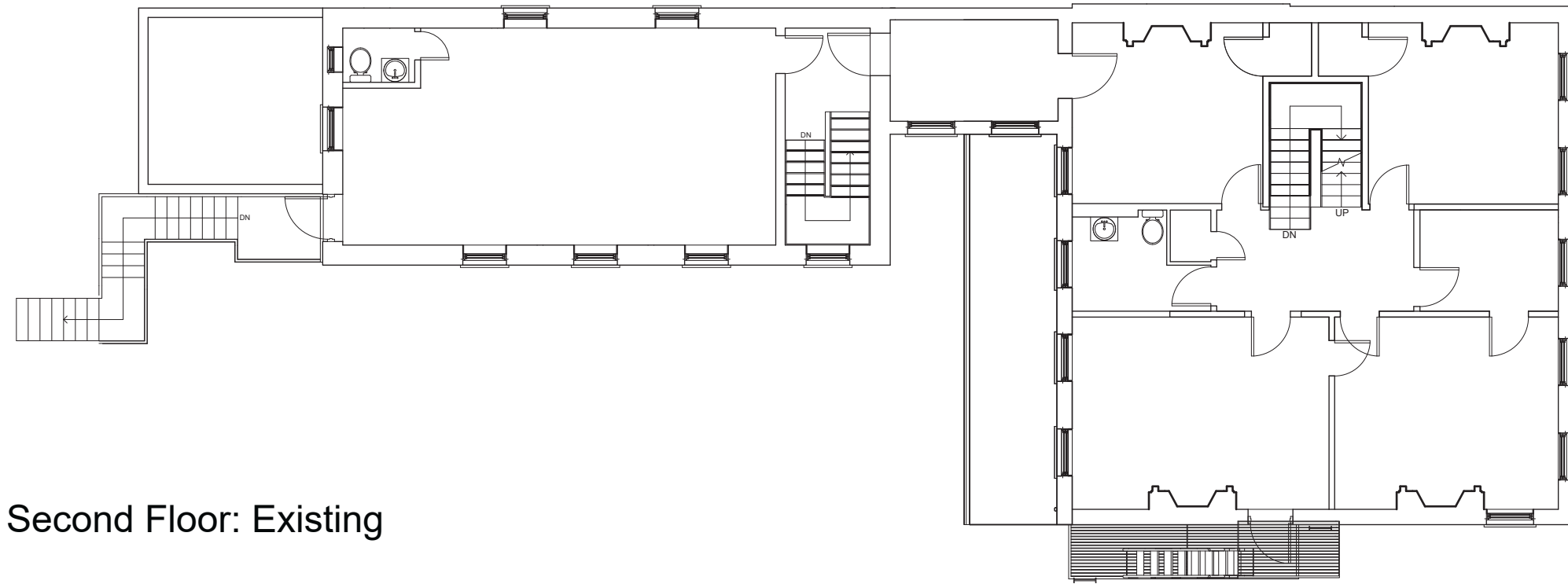


Mock Up Photograph: Porch/Annex addition.
(Location of new structure shown in pink.)

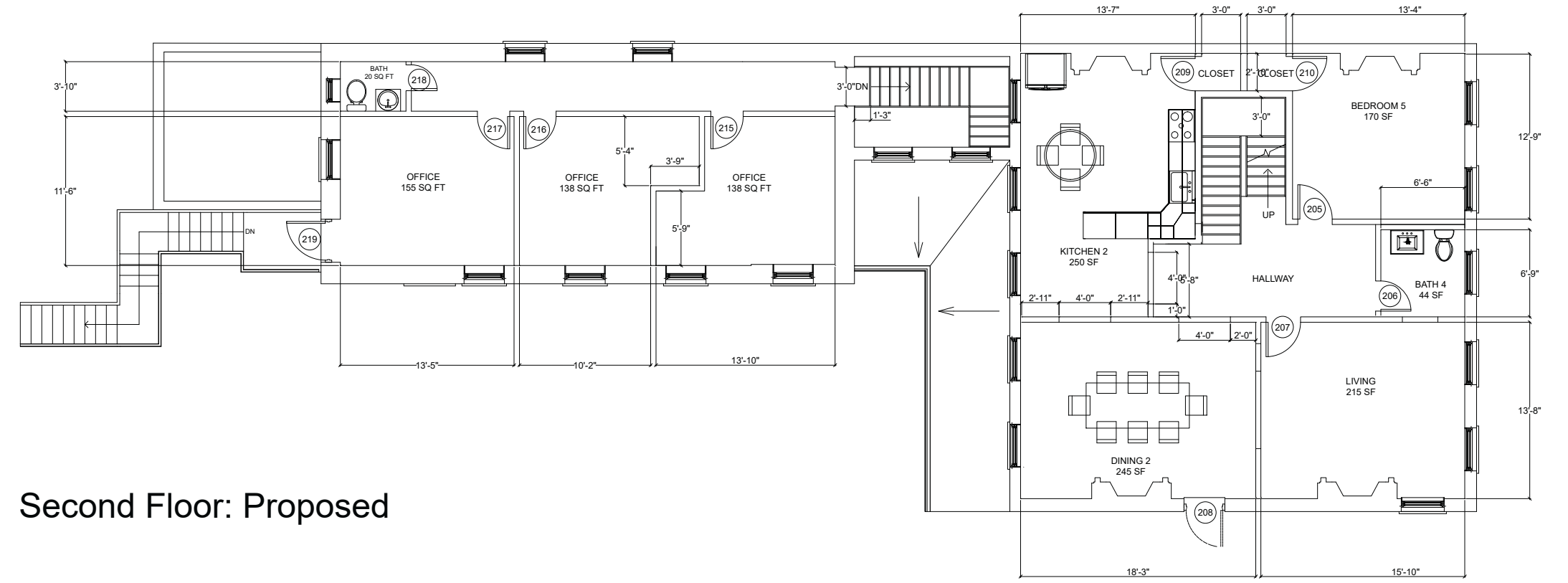


Mock Up Detail

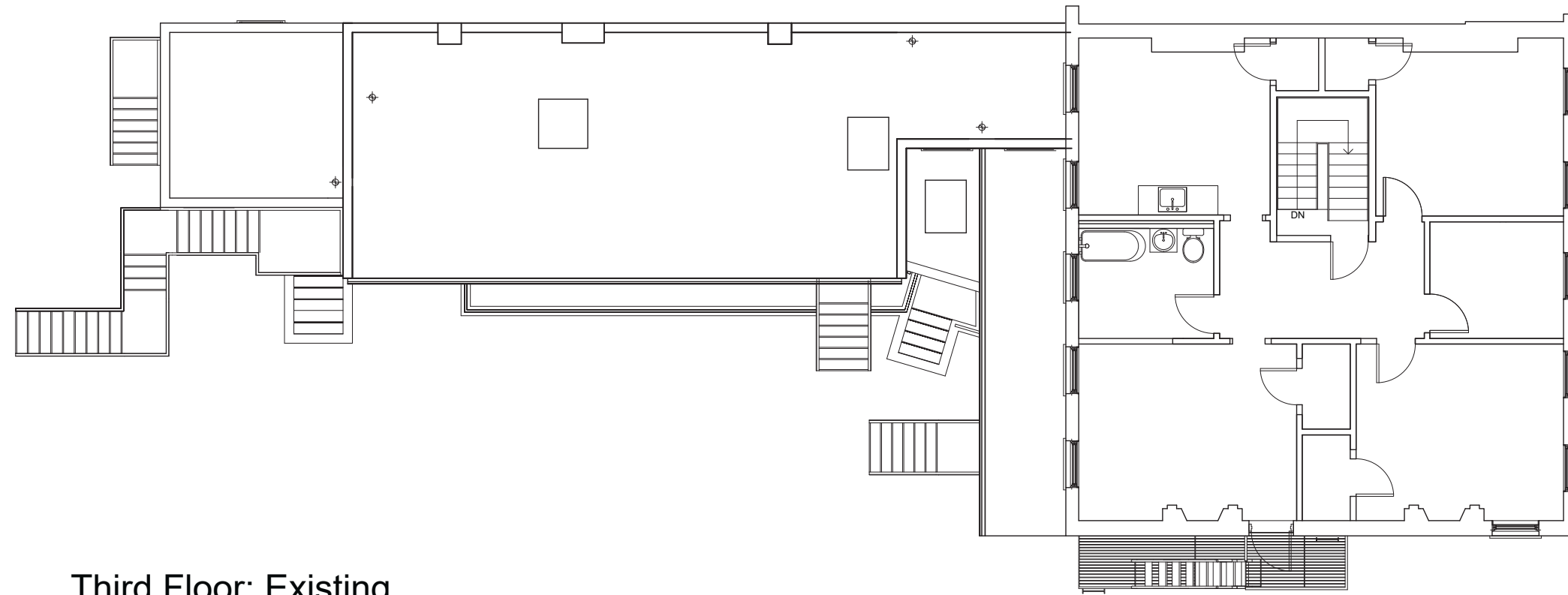
Plans



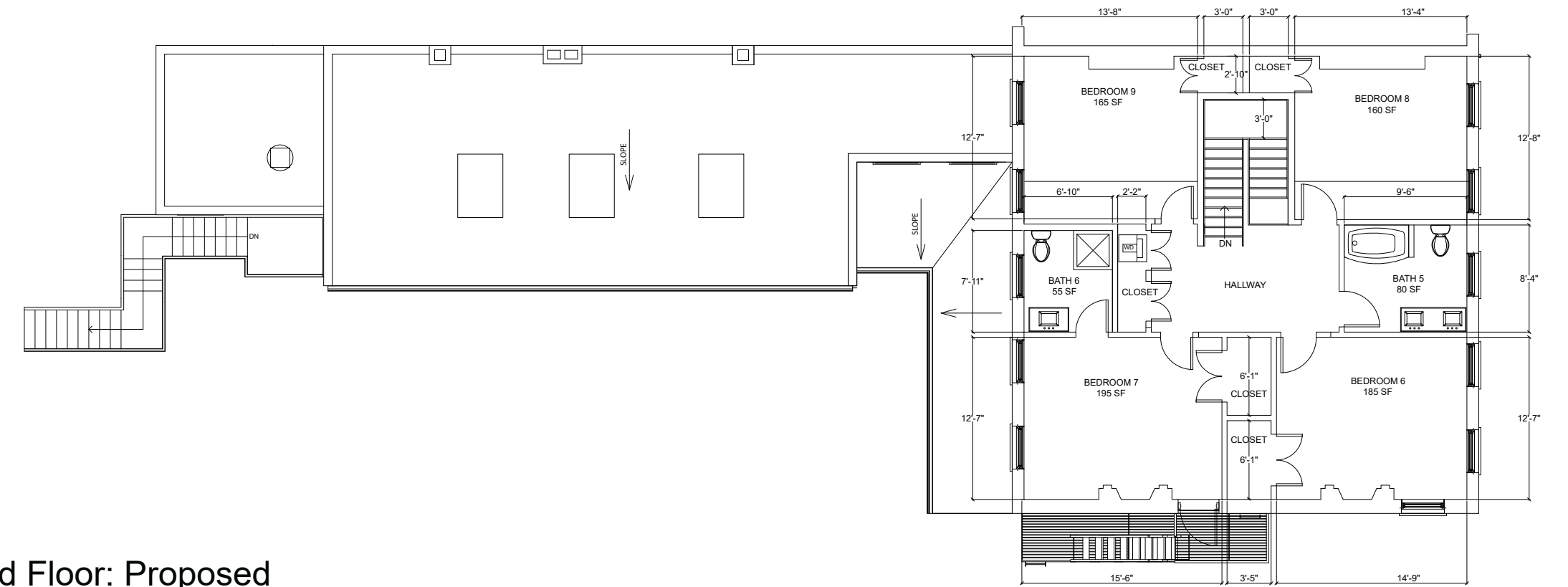
Second Floor: Existing



Second Floor: Proposed

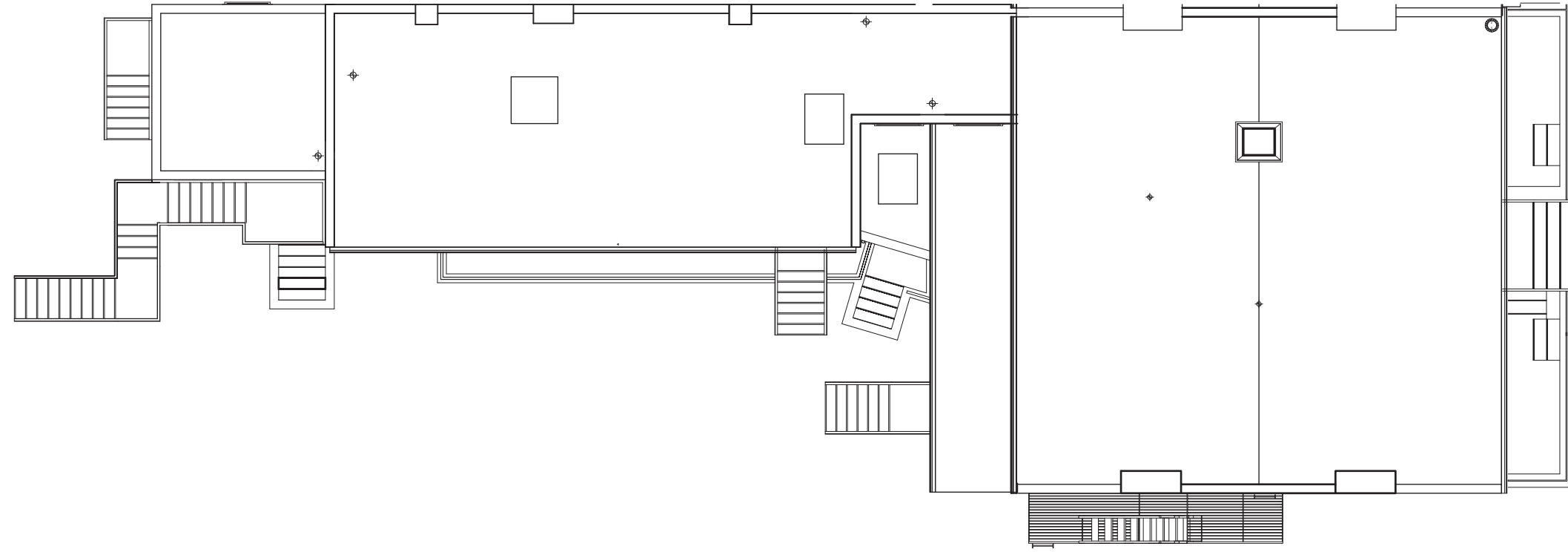


Third Floor: Existing

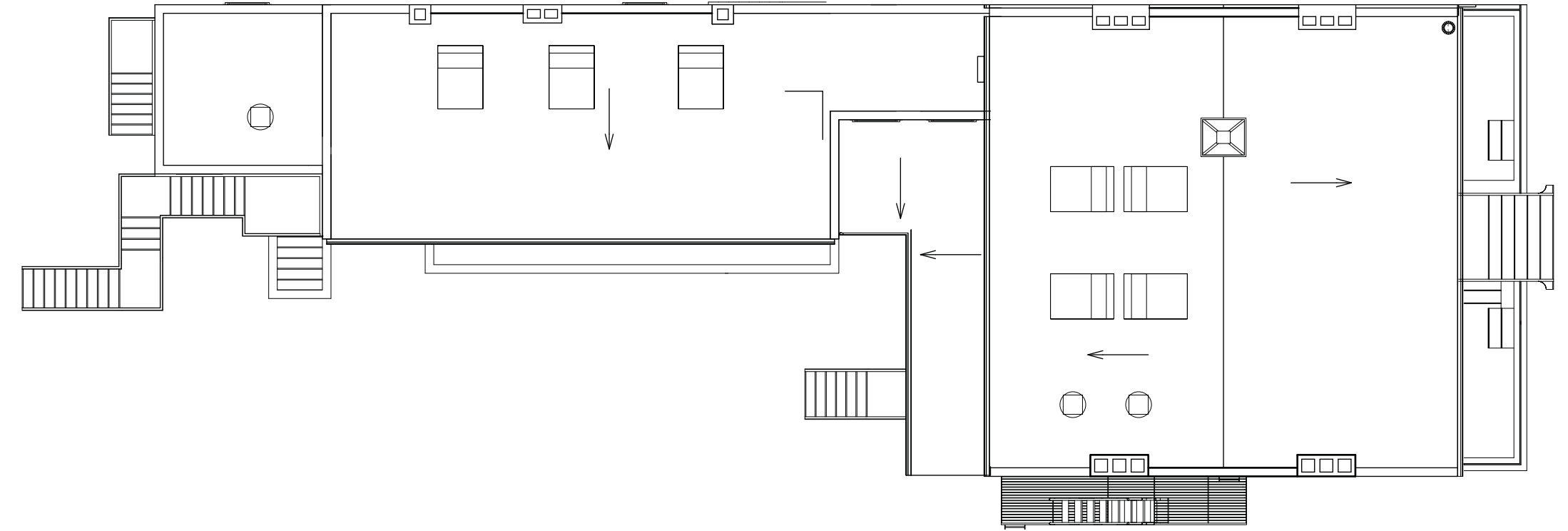


Third Floor: Proposed

Plans



Roof Plan: Existing



Roof Plan: Proposed

Elevations



West Elevation: Existing



West Elevation: Proposed



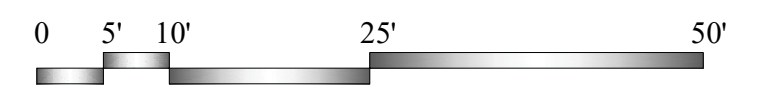
East Elevation: Existing



East Elevation: Proposed



Preservation, Planning & Sustainable Design
 One Bridge Street-Suite One
 Irvington, New York 10533
 914-931-1900 voice | 914-931-1999 fax
 www.MadernRains.com



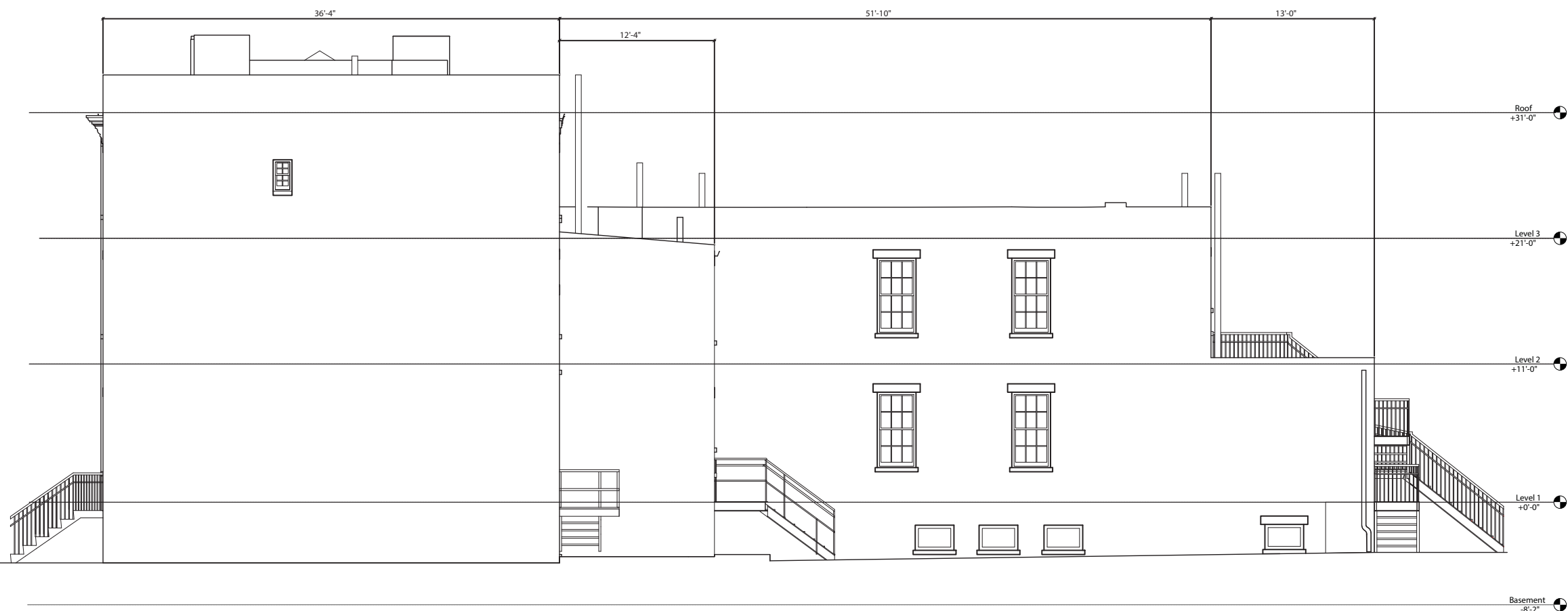
Elevations



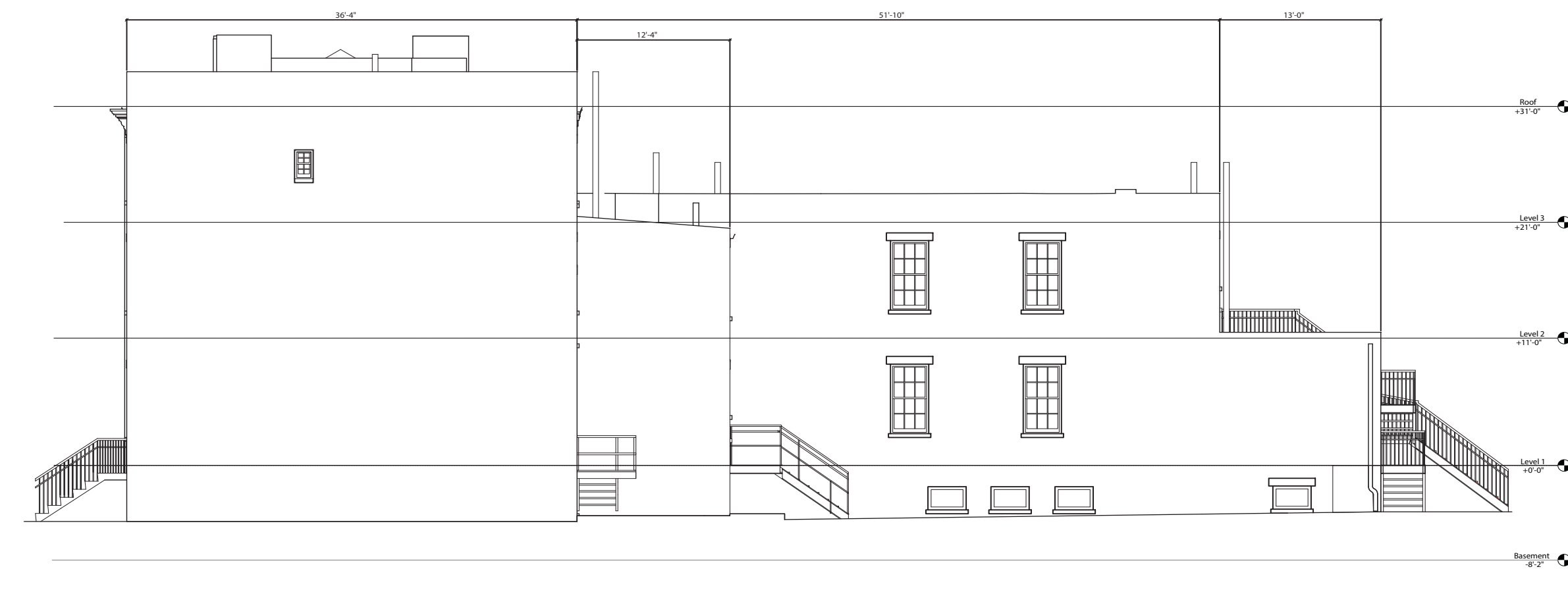
South Elevation: Existing



South Elevation: Proposed



North Elevation: Existing



North Elevation: Proposed



Preservation, Planning & Sustainable Design
 One Bridge Street-Suite One
 Irvington, New York 10533
 914-931-1900 voice | 914-931-1999 fax
 www.ModernRains.com

